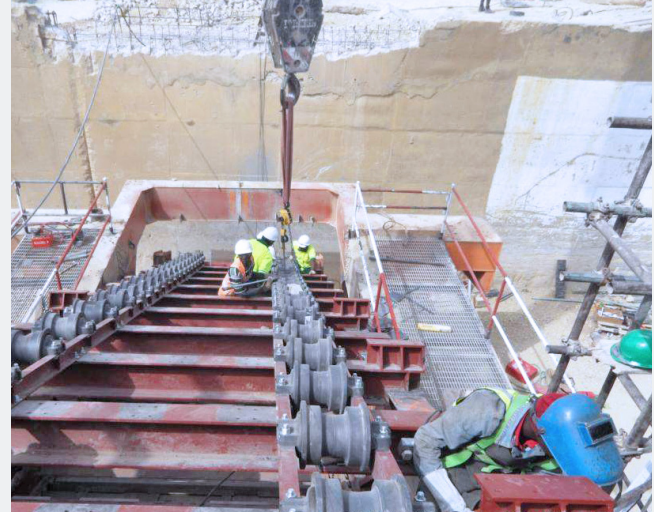


Apron feeder modernizations & converts



Successful and efficient project execution for conversion to the latest technology

When your feed conveyor is due for repair or refurbishment, thyssenkrupp offers their knowledge and qualified personnel to carry out the required work. Our crushing technology experts can engineer a modern state-of-the-art apron feeder into the existing installation. Based on the several aspects on technological, erection and cost side, it must be decided if the old mainframe can or shall be used further on.

thyssenkrupp's crushing technology team Germany/ Münsterland has high experience in the modernization of existing crushing plants. In several projects around the world our team has proven that our RKF system can be fitted in our own as well as in competitor crushing plants.

When thyssenkrupp or former companies of thyssenkrupp had been the OEM supplier of the crushing plant or the single feeder, we usually do have the design drawings. In this case, it can be checked if parts of the mainframe can be reused to reduce invest and assembly costs.

In other case we can offer a site survey including a 3D laser scan to design our machine according the plant needs. This will ensure that the machine fits to the plant considering a minimum of modifications on site.

Finally, thyssenkrupp's RKF design has already proven in more than 300 installations worldwide, that it is a tough and low-maintenance requiring machine.

Your service advantages

- Efficient project execution
- OEM parts to guarantee quality
- Cost efficient due to reusing of machine components (substructure, feed bin, guiding plates)
- Short plant down time (only 2-3 weeks)
- In long term view, significant reduction of maintenance costs
- Combined with our Field service team, we are able to offer on EPC basis